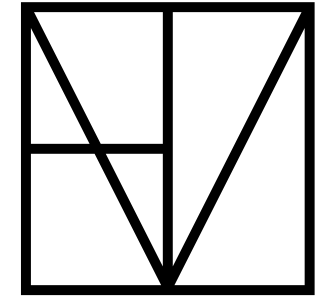


A13x™ ALUMINIUM SYSTEMS



METZ®



 **CERTIFIED**
NON-COMBUSTIBLE
CSIRO TESTED TO AS1530.1



PRESTO
CERAMIC FACADE SYSTEMS

Ventilated facades
Finishes
Textures
Colours



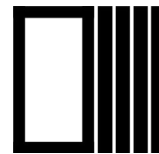
ONYX SOLAR
BUILDING INTEGRATED PHOTOVOLTAICS
(BIPV)

Double skin
Curtain walls
Skylights
Louvres
Walkable floor panels



BB FIBERBETON
GLASSFIBRE REINFORCED CONCRETE
(GRC)

Durable
Lightweight
Formable



Al3x™
ALUMINIUM SYSTEMS

Cladding
Batten
Woodgrain
Special finishes

METZ FACADES DIVISION

World renowned architectural facade
products under one umbrella





ALUMINIUM 101

6000 Series – Alloys are combined with both magnesium and silicon (forming magnesium silicide) and are extremely common alloys for general purpose uses in a huge variety of industries such as construction, architecture, automobile and more.

Aluminium is a versatile material that has been used in architecture for many years. It is strong, lightweight, and resistant to corrosion, making it ideal for use in a variety of applications. Aluminium can be formed into nearly any shape, which allows architects to create unique designs that are both functional and aesthetically pleasing. It is also endlessly recyclable, making it an environmentally friendly choice.

We offer locally extruded lower-carbon aluminium profiles ie. Cladding, battens, special sections and façade feature systems for architectural applications. "By choosing lower-carbon aluminium, your CO₂e emissions can be significantly reduced, giving you a cleaner, greener choice of your aluminium."*

Sourcing Capral's ASI-Certified aluminium produced in accordance with the ASI Performance Standard and ASI Chain of Custody Standard, demonstrates that the aluminium has been sourced and produced responsibly along the entire value chain.

Al3™ Aluminium is tested to:
AS1530.1, AS1530.3, AS4040.1, AS4040.2



* Capral



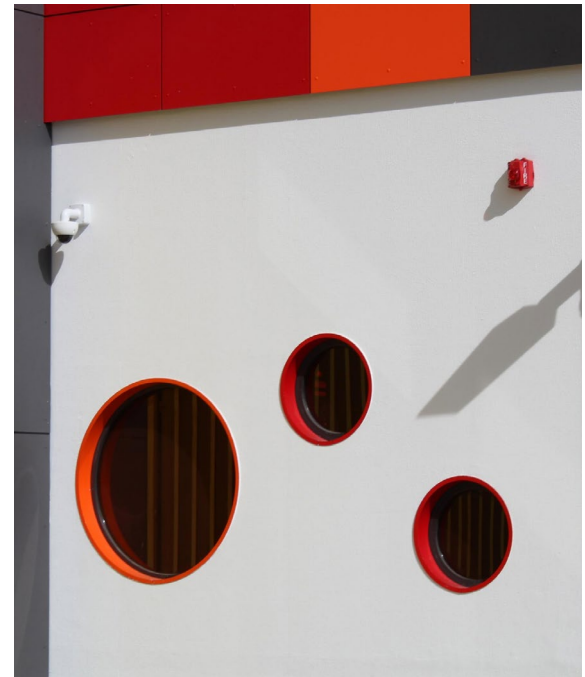
CLADDING & FACADE SYSTEMS

- **Al3x Clad 100**
100mm wide interchangeable cladding board
- **Al3x Clad 150**
150mm wide interchangeable cladding board
- **Al3x Clad 200**
200mm wide interchangeable cladding board
- Accessories and Trims
- Add-ons
- Customised profiles and project specific sections

BATTEN SYSTEMS

- 2-piece snap-on battens
- Easy installation
- Standard RHS, SHS, CHS etc.
- Elliptical Louvres
- Shading fins/elements
- Customised profiles and project specific sections

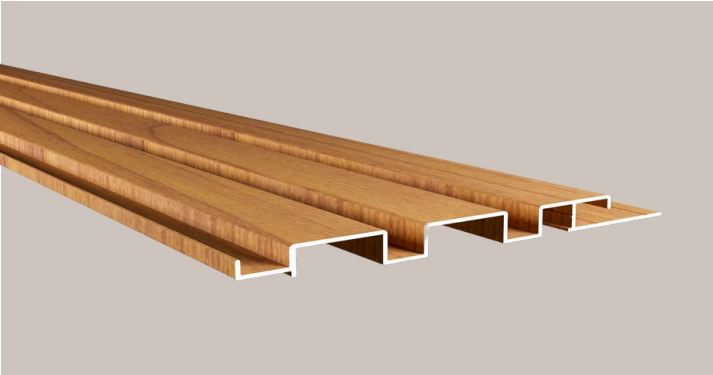




CLADDING & FACADE SYSTEMS



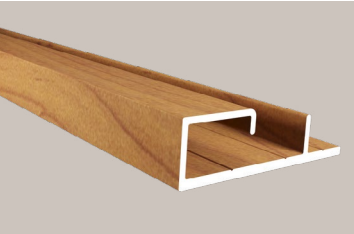
Al3x Clad 100/150/200



Al3x Clad 150 Castellated

- **Al3x Clad 100**
100mm wide interchangeable cladding board
- **Al3x Clad 150**
150mm wide interchangeable cladding board
- **Al3x Clad 200**
200mm wide interchangeable cladding board
- Accessories and Trims
- Add-ons
- Customised profiles and project specific sections

Al3x Clad Accessories and Trims



Al3x Clad Starter



Al3x Clad Corner M



Al3x Clad Corner F



Al3x Clad Trim F



Al3x Clad Trim M40 or M70



Al3x Clad T Joiner F



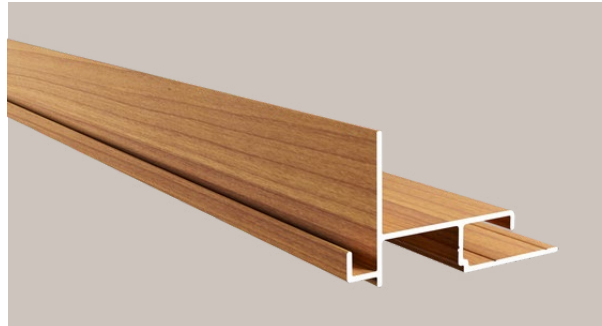
Al3x Clad T Joiner M

Customised sizes and designs available on request





Al3x Clad Box Attachment



Al3x Clad Seam Flat Attachment



Al3x Clad Seam Flat Attachment



Al3x Clad Bullet Head Attachment



Al3x Clad Batten Attachment

Customised sizes and designs available on request



Al3x 25 Series 2-piece Battens



Al3x 40 Series 2-piece Battens and Louvres

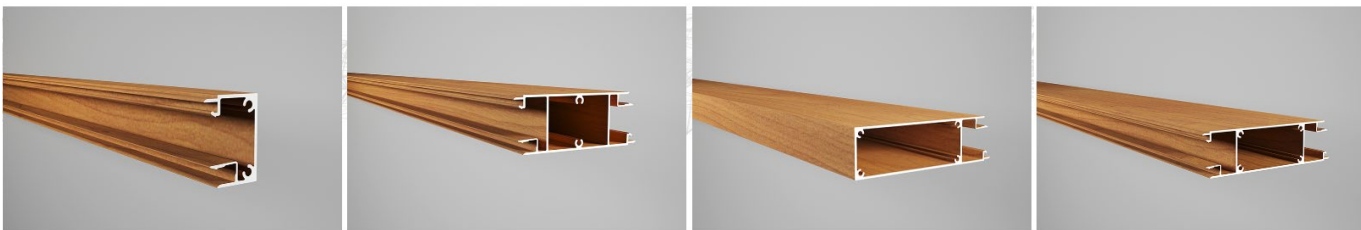


150x40 Elliptical Blade

20x40 End/Start Piece

150x40 Mid Batten

Al3X 45 Series 2-piece Battens



25x45 End/Start Piece

100x45 Mid Batten

150x45 Batten

150x45 Mid Batten

Customised sizes and designs available on request

BATTEN SYSTEMS

- 2-piece snap-on battens
- Easy installation
- Standard RHS, SHS, CHS etc.
- Elliptical Louvres
- Shading fins/elements
- Customised profiles and project specific sections



Al3x 50 Series 2-piece Battens



50x50



100x50



150x50



200x50

Al3X 75 Series Snap-on Battens and Louvres



25x75 End/Start Piece



200x75 Mid Batten



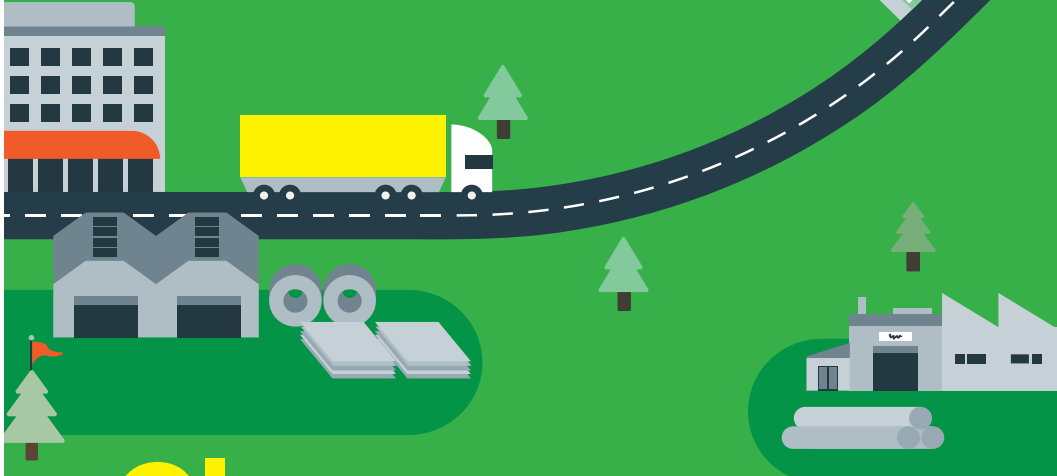
220x75 Batten



300x75 Elliptical Blade

Customised sizes and designs available on request





Cleaner, Greener, Lower-Carbon Aluminium for your project.

Introducing LocAl® —
Locally extruded, lower-carbon aluminium.

Aluminium is strong, lightweight and highly recyclable. But did you know that on average it takes 13.9 Kilograms CO2e to produce 1 Kilogram of primary aluminium?

By choosing lower-carbon aluminium, CO2e emissions can be significantly reduced, giving you a cleaner, greener choice for your aluminium.

LocAl® Aluminium is locally extruded, lower-carbon aluminium for your projects in construction, engineering, marine, transport, defence, renewable energy or general fabrication industries.

Locally extruded

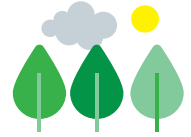
Extruded in Australia by Capral Aluminium, Australia's largest aluminium extruder established in 1936. Capral is committed to Net Zero by 2050 and working actively on reducing Scope 1 and Scope 2 emissions.



Low Carbon

Primary billet with certified CO2e content* at or below:

- 8kg CO2e/1kg AL - LocAL Green
- 4kg CO2e/1kg AL - LocAL Super Green



Aluminium

Capral Aluminium has been certified against the ASI Performance Standard V3 and Chain of Custody (CoC) V2 for the extrusion, warehousing and distribution of aluminium products and services.



* Kilograms emitted per kilogram of aluminium produced - Aluminium Smelting and Casting



When you choose LocAl® you are making a cleaner, greener choice for your project, potentially halving the carbon emissions of the aluminium used in your project.



Certified CO2 Content
8kg CO2e/1kg AL or below.
ASI CoC smelter and extruder.



Certified CO2 Content
4kg CO2e/1kg AL or below.
ASI CoC smelter and extruder.

Why Choose LocAl?

The carbon footprint of **LocAl® Green** is meaningfully lower than the global average for primary aluminium production*. **LocAl® Super Green** boasts one of the lowest carbon emissions for primary aluminium currently available.

Reducing carbon emissions from your products is important because it **mitigates the effects of global climate change, improves public health, boosts the global economy, and maintains biodiversity.** When we cut carbon emissions, we help ensure cleaner air, water, and food for our generation and for generations yet to come.

Choosing to use LocAl® Aluminium as part of a responsible procurement strategy for your business will positively impact your organisation's environmental impact and our climate.

* Kilograms emitted per kilogram of aluminium produced - Aluminium Smelting and Casting

Find out more about LocAl® and choosing lower-carbon aluminium for your project, visit: lowcarbonaluminium.com.au

Global Average

13.9kg CO2e/1kg Al



8kg CO2e/1kg Al



4kg CO2e/1kg Al



On the path to a
better tomorrow.



Metz sources ASI-Certified aluminium from Capral Aluminium for our products. ASI-certified aluminium means it is made following a comprehensive standard for governance, environment, and social performance.



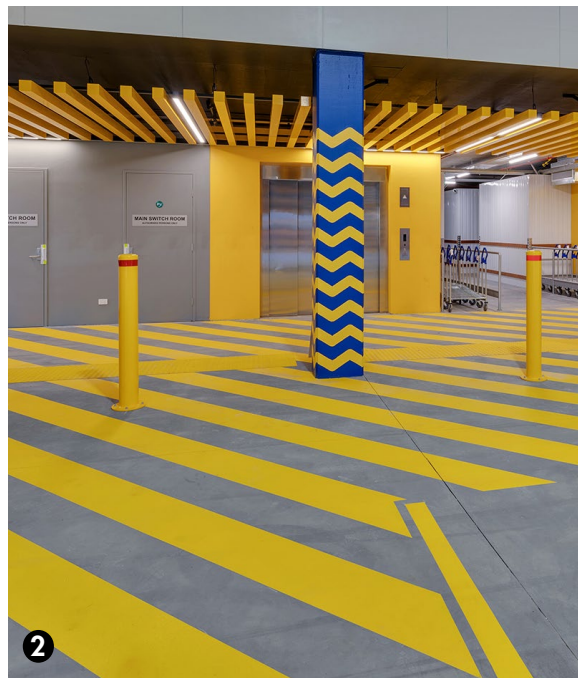
1

Project:
Storage King, Gregorys Hill

Builder:
Mainbrace

Product(s) utilised:
Al3x 5025 2-part Battens

Finishes/coatings:
Al3x Banksia



2

Project:
Storage King, Gregorys Hill

Builder:
Mainbrace

Product(s) utilised:
100 x 100mm SHS Hollow Section

Finishes/coatings:
Powder Coating Yellow Gold

1

Project:
Urban Nest Student Residential Apartment

Builder:
Buildcorp

Product(s) utilised:
Aluminium Casset System

Finishes/coatings:
Custom Sublimation

2

Project:
Inner Sydney High School

Builder:
Hansen & Yuncken

Product(s) utilised:
Al3x 7525 2-part Aluminium Battens

Finishes/coatings:
Al3x Banksia

3

Project:
Woolworths Moorebank Distribution Centre

Builder:
Richard Crookes Constructions

Product(s) utilised:
Al3x 5050 2-part Aluminium Battens

Finishes/coatings:
Al3x Correa





STANDARD WOODGRAIN COLOURS

These colours are our standard colours.

1. Flannel
2. Banksia
3. Saltbush
4. Eucalyptus
5. Boronia
6. Hakea
7. Waratah
8. Bottlebrush
9. Correa
10. Gynea

Customised colours available on request.

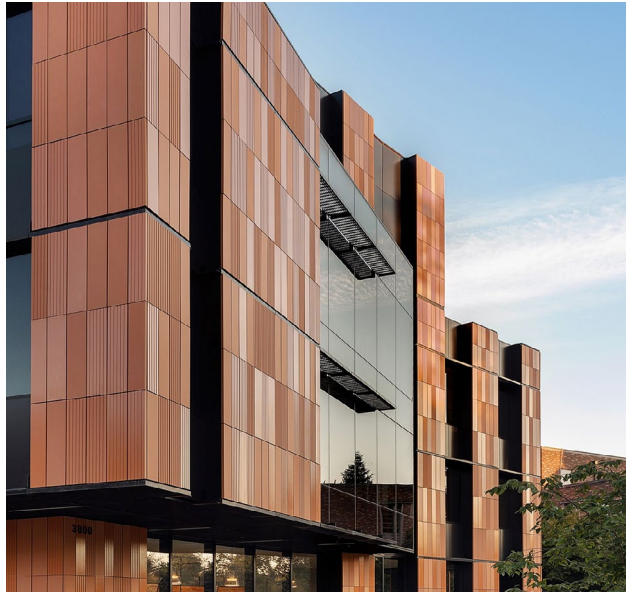




SPECIAL TEXTURED COLOURS

Customised colours available on request.







 **METZ**®

 **QUALITY EUROPEAN TILES**

CONTACT US

 1300 730 062

 facades@metztiles.com.au

 metzfacades.com.au

All sizes are nominal, please consult Metz for exact dimensions of available stock at time of ordering
Minimum quantities may apply for other than the items shown
Colour reproduction from printing is indicative only - please consult Metz for product samples

Metz facade products include:

Presto

Ceramic Facade Systems

Onyx Solar

Building Integrated Photovoltaics (BiPV)

BB fiberbeton

Glassfibre Reinforced Concrete (GRC)

Al3x

Aluminium Systems



REV: 03/24